



TRENT VALLEY WOODTURNERS



LOTTERY FUNDED

WOODWORD



Demonstrations	Competitions
Shaun Clifford	Anything Goes
Gary Rance	Paired Light Pulls
	Christmas Competitions

Winter 2021
Issue 109

CONTENTS

PAGE No

2	Editor's Comments
2	TVWT Club Website Information
3-5	Clubhouse Diary
6	Provisional Club Nights & Demonstrations 2022
6	Forthcoming Events
7	Memories of David Routledge
9	October Competition - Anything Goes
10	Pictures from the AWGB/SEND Day
10	Bird Boxes - Richard Thorpe
12-14	October demonstration - Shaun Clifford
15	Classified Ads
16-19	Box Making Sequence - Ian Ethell
21	November Competition - Paired Light Pulls
22-23	November Demonstration - Gary Rance
24	Trent Valley Trading & Photographs
25-26	Christmas Competitions
27	Rogues Gallery (Your 2021/2022 Committee)

SPONSORS

8	<u>Chestnut Products</u>
11	<u>Proops Brothers</u>
20	<u>Turners Retreat</u>
24	<u>Charnwood</u>



A MESSAGE FROM THE EDITOR

It is with great sadness that we have to dedicate this issue of Woodward to David Routledge who sadly passed away on Wednesday 29th December 2021. David had been our treasurer for the last seven years and was probably the person known by more of the members than anyone else. His cheeky smile and ability to talk the hind legs off a donkey endeared him to one and all even if we all did a lot less turning when he was around. Brian has summed him up beautifully - "He made me smile that chatty lovely man. I will miss him greatly".



Please do take a look at the club website (see below), Ben has made a number of enhancements and updates to bring it up to date and to make it easier to use for both members and visitors. The intent is to use the website as the route by which Hands-On sessions are booked, and eventually the way membership renewals will be managed. Of course in the interim, please don't forget to renew your membership by one of the methods I emailed to you all recently !

Special thanks to Ian and Richard for the articles they've put together for this issue.

Wishing you all a happy and healthy new year.

Bill

TVWT WEBSITE

The Club's Website address is

<http://www.trentvalleywoodturners.co.uk>

Members should visit the Website on a regular basis for any special or breaking news items.



TRENT VALLEY WOODTURNERS 2022 Clubhouse Diary



	JANUARY	FEBRUARY	MARCH	APRIL
Mon				
Tue		1 Hands On Day	1 Hands On Day	
Wed		2	2	
Thur		3 Hands On Evening	3 Hands On Evening	
Fri		4	4	1
Sat	1	5	5	2
Sun	2	6	6	3
Mon	3	7	7	4
Tue	4 Hands On Day	8	8	5
Wed	5	9 Monthly Meeting	9 Monthly Meeting	6
Thur	6 Hands On Evening	10	10	7 Hands On Evening
Fri	7	11	11	8
Sat	8 Hands On Day	12 Hands On Day	12 Hands On Day	9 Hands On Day
Sun	9	13	13	10
Mon	10	14	14	11
Tue	11	15	15	12 Hands On Day
Wed	12 Monthly Meeting	16 Open House	16 Open House	13 Monthly Meeting
Thur	13	17 Hands On Evening	17 Hands On Evening	14
Fri	14	18	18	15
Sat	15	19	19	16
Sun	16	20	20	17
Mon	17	21	21	18
Tue	18	22	22	19
Wed	19 Open House	23	23	20 Open House
Thur	20 Hands On Evening	24 Hands On Day/Eve	24	21 Hands On Evening
Fri	21	25	25	22
Sat	22	26	26	23
Sun	23	27	27	24
Mon	24	28	28	25
Tue	25		29	26
Wed	26		30	27
Thur	27 Hands On Day/Eve		31 Hands On Day/Eve	28 Hands On Day/Eve
Fri	28			29
Sat	29			30
Sun	30			
Mon	31			



TRENT VALLEY WOODTURNERS

2022 Clubhouse Diary



	MAY	JUNE	JULY	AUGUST
Mon	2			1
Tue	3			2
Wed	4	1		3
Thur	5 Hands On Evening	2 Hands On Evening		4 Hands On Evening
Fri	6	3	1	5
Sat	7	4	2	6
Sun	8	5	3	7
Mon	9	6	4	8
Tue	10 Hands On Day	7	5	9 Hands On Day
Wed	11 Monthly Meeting	8 Monthly Meeting	6	10 Monthly Meeting
Thur	12	9	7 Hands On Evening	11
Fri	13	10	8	12
Sat	14 Hands On Day	11 Hands On Day	9 Hands On Day	13 Hands On Day
Sun	15	12	10	14
Mon	16	13	11	15
Tue	17	14 Hands On Day	12 Hands On Day	16
Wed	18 Open House	15 Open House	13 Monthly Meeting	17 Open House
Thur	19 Hands On Evening	16 Hands On Evening	14	18 Hands On Evening
Fri	20	17	15	19
Sat	21	18	16	20
Sun	22	19	17	21
Mon	23	20	18	22
Tue	24	21	19	23
Wed	25	22	20 Open House	24
Thur	26 Hands On Day/Eve	23	21 Hands On Evening	25 Hands On Day/Eve
Fri	27	24	22	26
Sat	28	25	23	27
Sun	29	26	24	28
Mon	30	27	25	29
Tue	31	28	26	30
Wed		29	27	31
Thur		30 Hands On Day/Eve	28 Hands On Day/Eve	
Fri			29	
Sat			30	
Sun			31	
Mon				



TRENT VALLEY WOODTURNERS 2022 Clubhouse Diary



	SEPTEMBER	OCTOBER	NOVEMBER	DECEMBER
Mon				
Tue			1 Hands On Day	
Wed			2	
Thur	1 Hands On Evening		3 Hands On Evening	1 Hands On Evening
Fri	2		4	2
Sat	3	1	5	3
Sun	4	2	6	4
Mon	5	3	7	5
Tue	6	4	8	6 Hands On Day
Wed	7	5	9 Monthly Meeting	7
Thur	8	6 Hands On Evening	10	8
Fri	9	7	11	9
Sat	10 Hands On Day	8 Hands On Day	12 Hands On Day	10
Sun	11	9	13	11
Mon	12	10	14	12
Tue	13 Hands On Day	11 Hands On Day	15	13
Wed	14 Monthly Meeting	12 Monthly Meeting	16 Open House	14 Christmas Social
Thur	15 Hands On Evening	13	17 Hands On Evening	15 Hands On Evening
Fri	16	14	18	16
Sat	17	15	19	17 Hands On Day
Sun	18	16	20	18
Mon	19	17	21	19
Tue	20	18	22	20
Wed	21 Open House	19 Open House	23	21
Thur	22	20 Hands On Evening	24 Hands On Day/Eve	22
Fri	23	21	25	23
Sat	24	22	26	24
Sun	25	23	27	25
Mon	26	24	28	26
Tue	27	25	29	27
Wed	28	26	30	28
Thur	29 Hands On Day/Eve	27 Hands On Day/Eve		29
Fri	30	28		30
Sat		29		31
Sun		30		
Mon		31		

Club Nights 2022 - Provisional

DATE	DEMONSTRATOR
January 12th	Wolfgang Schulze-Zachau
February 9th	Ben Wild
March 9th	AGM
April 13th	Chris Fisher
May 11th	Emma Cook
June 8th	Richard Findlay
July 13th	Chris Parker
August 10th	tba
September 14th	Robin Barlow
October 12th	Terry Smart - Chestnut
November 9th	Rick Dobney
December 14th	Christmas Social

FORTHCOMING LOCAL EVENTS

Nothing known at present

DEMONSTRATIONS FURTHER AFIELD

All cancelled/postponed until further notice.

Memories of David Routledge

It is with great sadness that I share my thoughts and memories of my dear friend David, whom I met shortly after joining the Woodturning Club about 5 years ago. David's personality shone through and he was always willing to help and advise. David showed this willingness to help not only to individual members of the club but also in his enormous contribution to the running of club through his work on the Committee, as the treasurer, running the Wednesday Open House and the Thursday evening class. A compulsive chatterbox and with that distinctive Durham accent, he was easy to listen to and always put you at ease, through his warm and engaging disposition. I would often arrive early, before the Thursday evening class, in the knowledge that David would already be at the club, sitting at the desk, with a cup of tea and eating his meal. I would sit with him and share the chips I had purchased from the chip shop. We would talk about a range of subjects including his time spent working at British Gypsum, and a shared interest in a wide range of practical topics. Often when woodturning, David would come over to my lathe to chat. This would frequently result in no turning being done at all!

He made me smile that chatty lovely man. I will miss him greatly ...Brian



I don't recall if David actually did any turning at this hands-on session but mounting the wood is further than he would normally get because he was generous with his assistance and always ready to chat. He will be missed ...Ben

David was such a welcoming personality at the club. Always ready with a joke and always happy to give advice and assistance when asked. He will be greatly missed. ...Hugh

David was the first person that I met at the club. I turned up for a turning session but he was the only one present, we chatted and I showed him a few things that I'd turned. He looked at them with interest but didn't comment on them. He suggested that I went to the next Thursday evening session which I did. He then showed me the ropes and without saying anything checked that I was safe to join and turn without doing a 'learn to turn' course!! I always found him helpful and have missed his constant chattering over the past few months. He will be missed at the club. ...Richard



I first got to know David around 2013/14, at that time I was Treasurer and Peter Allen was Secretary. Peter decided it was time to step down after 17 years and I offered to take on the role if we could find someone to take on the Treasurer's role. Without hesitation David volunteered, the rest is history!

In his first year as well as getting to grips with the everyday running of the club he had the additional headache of sorting the mountain of invoices and receipts for the new build. Extremely competent, nothing ever fazed David and everything ran smoothly from then onwards. As well as his Committee responsibilities David did so much more, helping at the 'Learn to Turn' classes, instigating and running the evening 'Hands on' sessions, and Wednesday afternoon 'Open House'. Always ready to assist with Shows and events throughout the year.



He also had the ability to make people feel at ease, welcoming and totally committed to the club. He could talk for England!! He will be greatly missed. ...Barbara

Sale
US Stockist
Enquiries Welcome.
Tel/Fax 888-631-8311



CHESTNUT

P A O D U C T S

first for finishes



Used by woodturners of all abilities throughout the UK and the world, the Chestnut Products range of top quality finishes gives outstanding results every time; whatever you are making and whatever your preferred finishing system there is bound to be something in our range to meet your needs.

*See your local stockist for more information
or for a catalogue/price list contact us at:*

Chestnut Products
PO Box 260, Stowmarket,
IP14 9BX

Tel: 01473 890 118 Fax: 01473 206 522

www.chestnutproducts.co.uk
mailroom@chestnutproducts.co.uk

Stockist enquiries welcome

Lacquers

Polishes

Waxes

Polish Enhancers

Wood Treatments

Polishing Brushes

Abrasives

Stains

Thinners

Applicators

Superglues

Buffing Systems

Acrylic Blanks

...and much more

ANYTHING GOES COMPETITION – October 2021



Stan Ethell



Alex Mitchell



Ben Wild



In October our club hosted a AWGB Hands-On Day for nominated individuals with Special Educational Needs. Here are a few pictures from the day...



BIRD BOXES

Its the time of year when we might be thinking of making bird boxes. The RSPB publish some good guidance which can be found here :- <https://www.rspb.org.uk/birds-and-wildlife/advice/how-you-can-help-birds/nestboxes/nestboxes-for-small-birds/making-and-placing-a-bird-box/>

However it is worth noting a couple of points:-

- The boxes need to be much bigger than many that are turned - the lip of the hole should be around 5 inches above the bottom of the box. This means that the bottom section of the box will need to be at around 7 inches tall.
- The inside should be left rough - this allows nestlings to grip to aid climbing up to the exit hole.
- The size of the hole varies according to the species of birds it is intended for;- 25 mm for blue, coal and marsh tits, 28 mm for great tits, tree sparrows and pied flycatchers, 32 mm for house sparrows and nuthatches, 45 mm for starlings.
- The bottom of the box should have some drainage holes in it.
- A perch below the hole is not required.
- The box should be left untreated - it will weather naturally in time.



70 years of tooling excellence.

PROOPS BROTHERS
ENGLAND • EST 1946 **.COM**

34 Saddington Road, Fleckney, Leicestershire, LE8 8AW

Shaun Clifford Demonstration Evening 13-October-2021

Shaun has been turning since he was 10 years old (so over 40 years), and amongst other jobs he was a tree surgeon for 15 years. He now makes his living from turning, both from making and selling artistic pieces through galleries, and from demonstrating and teaching in his custom studio/workshop in Suffolk. He invariably uses green timber, mostly large pieces, and once started on a piece, always turns to a finish.



Shaun's demonstration for us was to be a floating winged bowl from a large (perhaps 50cm * 20cm diameter) laburnum log. One side had already been cut flat on the bandsaw and attached to a face plate; this would be the top surface of the bowl

The underside was flattened using a long bowl gouge, initially with push cuts from edge towards centre and then pull cuts in the opposite direction. Once sufficiently flat, he started the shaping by undercutting each end to create the feet with the bottom of the bowl left in between.



Shaun turned a broad spigot at the bottom of the bowl for re-chucking for turning the top surface. The spigot was left broad as the wood isn't very strong so with the pull from the wide wings, a narrow spigot could easily deform and break. The spigot will eventually be turned off to leave the bottom surface of the bowl about an inch higher than the feet, creating the floating effect. At this stage, the underside of the wings and the feet are fully shaped, but the bottom of the bowl is only approximate as it will be refined when the spigot is removed later on.

The part shaped log was then turned and remounted on the spigot using a wide jawed chuck. The first bit of turning on the top surface was to remove the excess corners on the ends of the log, and then the underside shape of the feet was followed on the top, leaving the bowl part alone for now. On any green wood

turning, it is important to ensure as far as possible that there is a consistent thickness throughout the work to minimise the risk of splitting, and if any bark is to remain as a feature, it is worth soaking it in CA glue to keep it attached.



Once the wings/feet have been done, the bowl can then be turned out, paying attention to the thickness of the bowl itself, and the way the wings flow into the bowl. With the top surface complete, the bowl can be reversed to remove the spigot and refine the shape of the bottom of the bowl. Shaun used a pre-formed domed shape in the chuck with some non-slip cloth and bubble wrap to protect the inside of the bowl, held firm with the tailstock. The very final nib of the spigot was sawn off and sanded smooth.



Shaun isn't a fan of colouring or shiny finishes, so usually sands all the way through to 1200 grit and finishes in oil – usually Chestnut Products Lemon Oil.





Here's an example of another bowl that Shaun brought with him to show the sort of work he does ...



CLASSIFIED ADS

For Sale

Ebony Wood Blanks

Corian Off-cuts:

12mm, 20mm or 25mm thickness

All individually priced

Corian & Acrylic Pen Blanks

Contact Bernard on 01530 461149 or 07922 125951

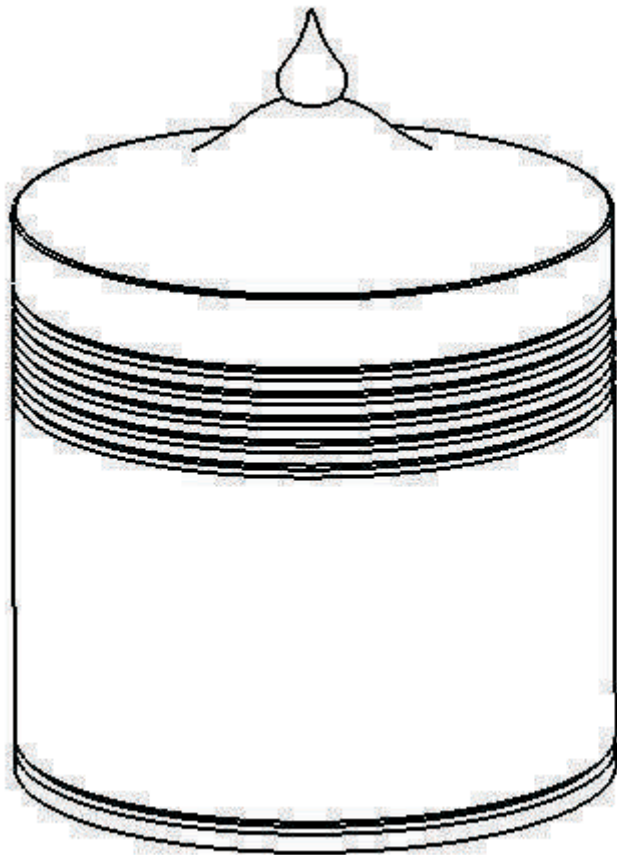
Items Wanted

'Tools for Africa' - if you have any surplus usable tools, please contact
Martin Gladders, Age UK - Men in Sheds, Oaks Industrial Estate,
Loughborough, LE11 5XN. Tel: 01509 211603

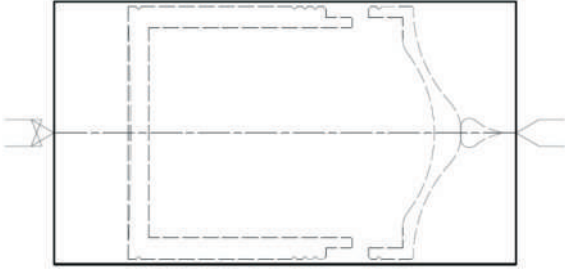
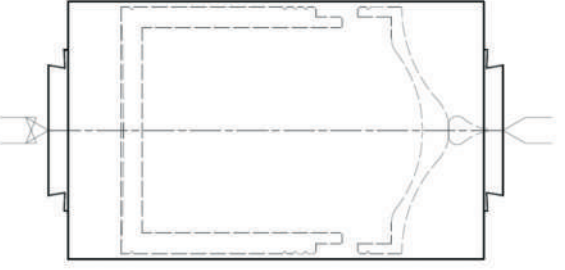
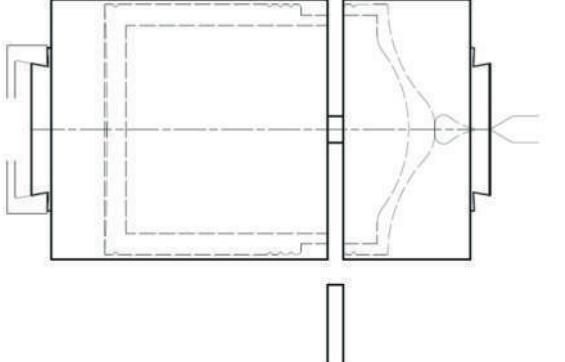
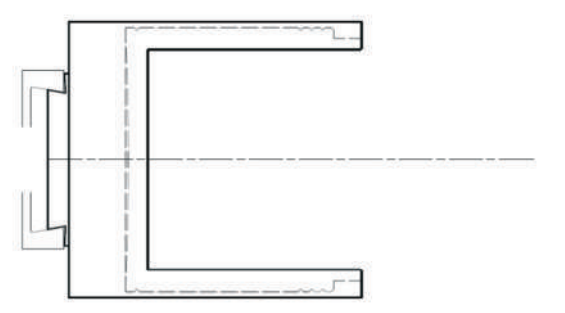
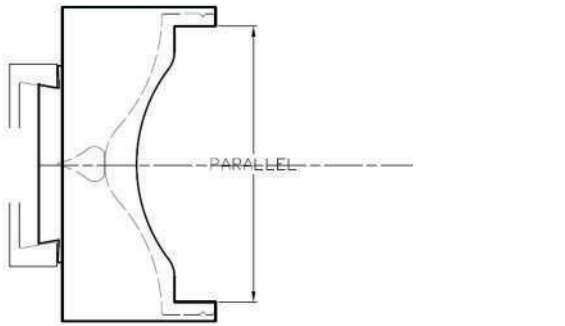
Trent Valley Woodturners

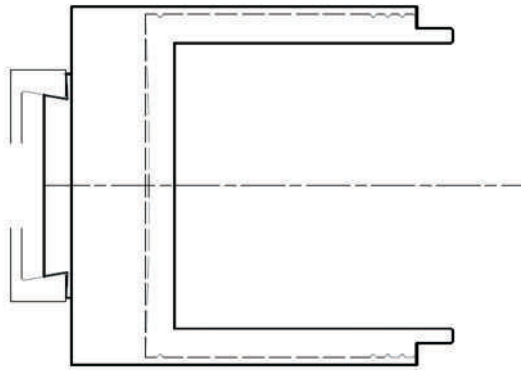
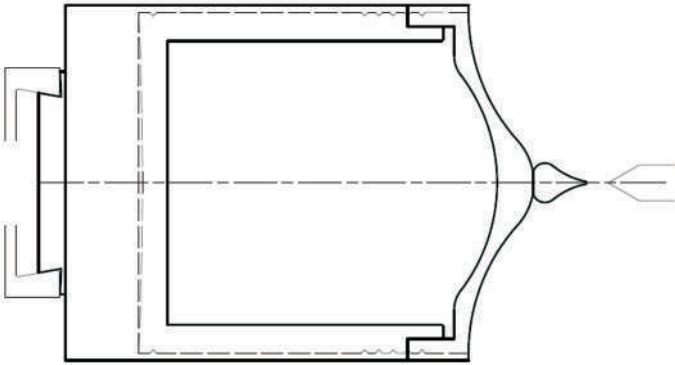
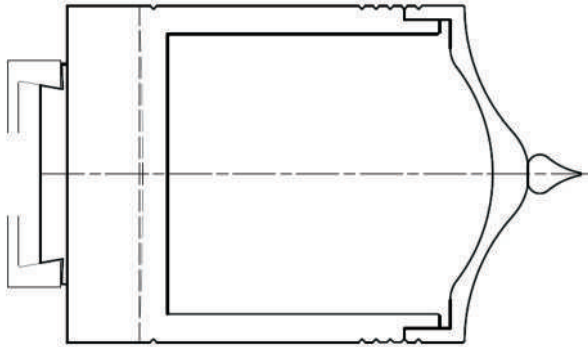
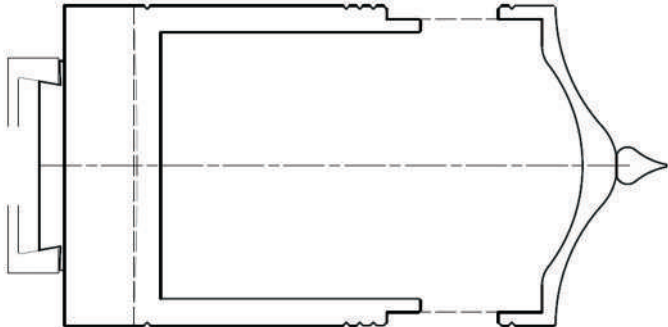
Box Making Sequence

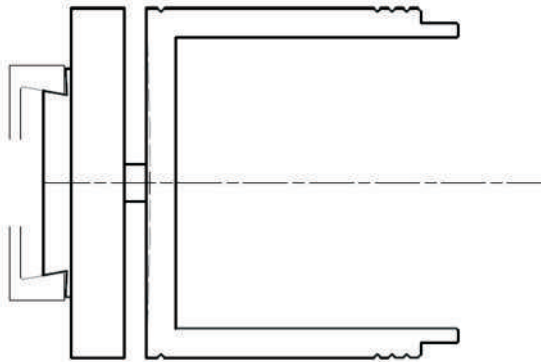
[Document subtitle]



Ian Ethell
11-21-2021

	<p>Step 1 Mount the blank between centres and turn to a cylinder with a spindle roughing gouge.</p>
	<p>Step 2 Turn a dovetail spigot on either end of the blank, ensuring that it is sized correctly (38mm for the club chucks) with a shallow undercut shoulder to sit on the top face of the chuck jaws. (48mm dia for club chucks) (See separate notes on chucking)</p>
	<p>Step 3 Mount the blank in a chuck, ensuring it is seated firmly on the jaws. Remove the tailstock before parting all the way through to prevent the parting tool grabbing.</p>
	<p>Step 4 Hollow out the base of the box to the required depth with spindle gouge and scraper. Sand and finish the inside.</p>
	<p>Step 5 Mount the lid section in the chuck and hollow out to the required shape and depth. Ensure the internal sides are parallel as this will be important to getting the lid to fit properly. Sand and finish the inside of the lid.</p>

	<p>Step 6 Mount the base section back in the chuck and turn a shoulder on the top edge to give a tight fit with the lid.</p>
	<p>Step 7 Fit the lid ensuring the grain is aligned as best as possible, and turn the top surface of the lid. The revolving centre can be kept in place if required until the knob/finial needs to be finalised if you prefer, although the fit of the lid/ base should be tight enough to turn without it.</p>
	<p>Step 8 True up and finish turn the sides of the base and lid. Add vee grooves to disguise the lid joint and slight grain mis-match. Sand and finish the outside of the base and lid.</p>
	<p>Step 9 Remove the lid and lightly sand the shoulder on the base to give the fit required with the lid. Finish the shoulder and top edge of the base.</p>



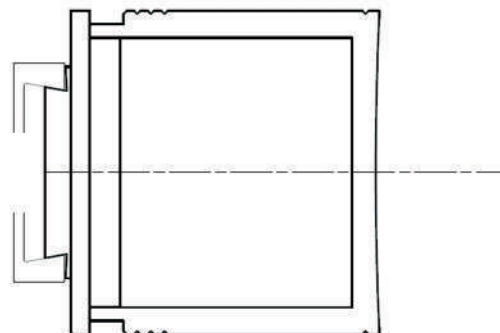
Step 10

Part off the base of the box leaving enough waste in the chuck to form a jam chuck.



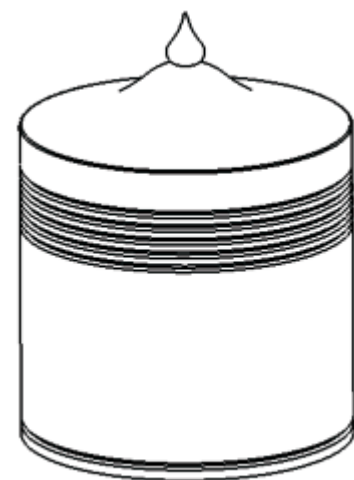
Step 11

Turn a spigot on the waste to be a tight fit inside the base of the box.



Step 12

Jam fit the base onto the waste wood and finish turn the bottom of the box, making it slightly concave to ensure it sits on a flat surface if the wood distorts slightly.



The Finished Box

Turners Retreat

THE WOODWORKERS SOURCE

Craft Supplies

BE INSPIRED, BE CREATIVE

Nick Agar
**SIGNATURE
SERIES**



Now available
at
Turners
Retreat



PETER CHILD ARTIST'S PYROGRAPHY MACHINE

*Create beautiful textures,
designs and patterns.*

- Slim, light and comfortable pen design
- Perfect for precise detailed work
- Cool running handle for comfort
- Warms from cold in 2 seconds
 - Excellent reliability
 - Incredible durability

*'I use it every day, its durability is
nothing short of amazing – it's
perfect for me and my students.'*

Bob Neill

Professional pyrographer and teacher

Craft Supplies

BE INSPIRED, BE CREATIVE

A product by...

Turners Retreat, Faraday Close, Harworth DN11 8RU

www.turners-retreat.co.uk

01302 744344

eshop@turners-retreat.co.uk

PAIRED LIGHT PULLS Competition – November 2021



Stan Ethell



Ben Wild



Alex Mitchell



Gary Rance Demonstration Evening 10-November-2021



Gary has been a full-time turner for 46 years since he was 16, starting work in a company where the lathes were powered by a steam engine. Since Adding demonstrations to his activities he has visited 105 different clubs and has done as many as 70 demonstrations in a single year.

Before starting on his demonstration piece, Gary ran through all the basic turning cuts, mostly using his preferred round shafted skew chisel. He recommends using pine when practising as you can't scrape pine, it has to be cut. He showed a pommel, cove, bead, ogee, V cut, spigot and planing all with the same tool. As a production turner, avoiding wasting time is critical, so learning the best body position to allow cuts to be made with the minimum change of position is vital.

Gary's main demonstration piece tonight was a salt bell made from a piece of tulip wood measuring 60mm * 60mm * 75mm. This is a salt shaker which only delivers salt when shaken up & down and not when standing still.

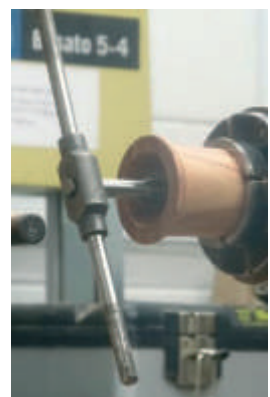
The block was mounted between centres and a chucking spigot was turned at the headstock end. At the tailstock end the first 1.5" were turned down to a 40mm diameter and the shaped into a funnel. It was then remounted in the jaws, re-trued and a 3mm hole was drilled all the way through the funnel and into the block. Once sanded, the funnel was parted off leaving a guide line on the block at the diameter of the funnel.

The inside of the bell was then hollowed out to the depth of the funnel plus about 3mm before a 12mm hole was drilled all the way through the block and an internal thread was cut using an engineering tap.

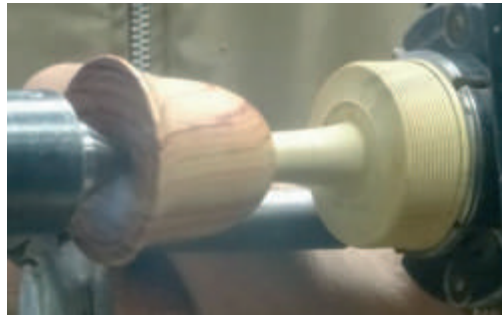
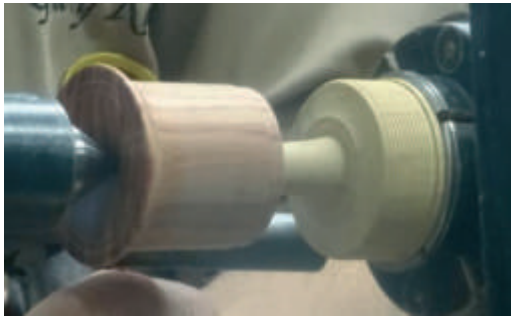


A small step/seat was cut in the mouth of the bell to accommodate the funnel, proceeding very carefully to get a nice fit. Once the fit was good, the funnel was reversed, the grain aligned as well as

possible and the funnel glued into the mouth of the bell. The base of the bell (mouth and funnel) was now cleaned up, slightly dished and the join disguised by the addition of a couple of decorative lines.



In order to turn the external bell shape, the piece was remounted on a jam chuck inserted into the threaded 12mm hole at the top of the body.

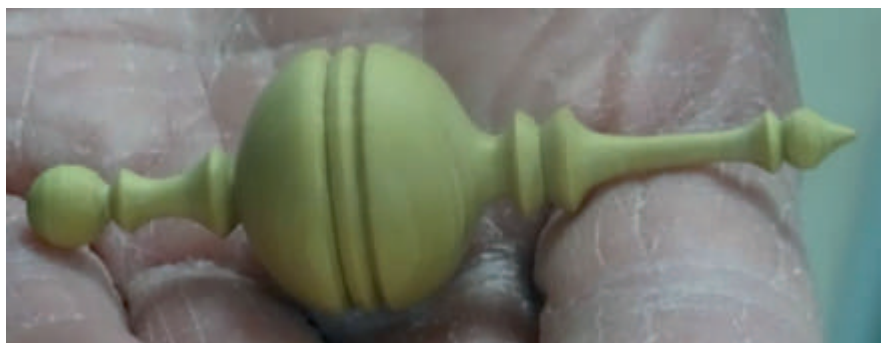


A handle was then turned from a piece of ebony turned down to 21mm, shaped, sanded and threaded to fit into the top of the bell body. Gary chased the thread by hand, making it look ridiculously easy.



The finished salt bell was then demonstrated (using sugar instead of salt !)

With a few minutes remaining, Gary turned a small Christmas decoration/bauble from a square section piece of lemon wood held directly in the jaws, turned down to 20mm and shaped with a 1mm diameter finial shaft and 3mm 'blobs'.

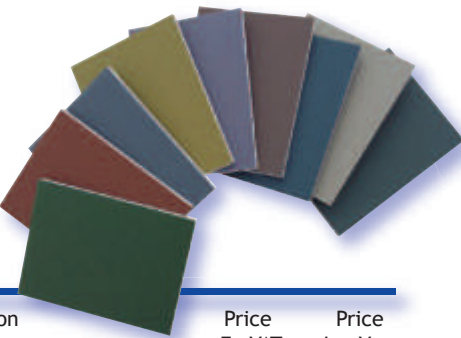


charnwood

Woodworking machinery at its best!

Size 20mm x 20mm x 130mm Long.
Sand on the lathe using our PENSP foam backed sanding pads from 1500 up to 12000 grit to give a super fine finish.
Finish with Burnishing Cream for a high gloss finish.

Foam Backed Sanding Pads 10cm x 8.5cm



Stock Ref	Description	Price Ex VAT	Price Inc Vat
PENSP	Sanding Pads - Pack of 9	£8.33	£10.00

Designed specifically with pen turners in mind. This finishing kit consists of nine different, colour coded, foam backed sanding pads measuring 10cm (4") x 8.5cm (3.1/4").

Includes the following grit sizes:

1500 - Rust, 1800 - Green, 2400 - Black, 3200 - Tan,
3600 - Wine/Brown, 4000 - Teal, 6000 - Purple,
8000 - Royal Blue, 12000 - Grey

Suitable for wood and acrylic blanks .

New Range of Pen Turning Items Including those below

Classic Elite Rollerball & Fountain Pen



Stock ref	Description	Price Ex VAT	Price Inc Vat
PENERB	Classic Elite Rollerball Pen	£6.67	£8.00
PENEF	Classic Elite Fountain Pen	£6.67	£8.00
PENER	Black Rollerball Refill - Pack of 2	£2.08	£2.50
PENET	Spare Tubes - Upper & Lower	£2.08	£2.50
PENEBUSH	Bush Set	£2.50	£3.00
PBD10	10mm Drill Bit	£4.17	£5.00

This high quality gold plated Roller Ball pen makes the ideal gift along with the Fountain Pen.

Visit our website www.charnwood.net or showroom at Cedar Court, Walker Road, Bardon Hill, Leicester, LE67 1TU
Tel 01530 516926

TRENT VALLEY TRADING

Lots of woodturning accessories are available to purchase at discounted prices from the shop. The list and price of equipment is available on request. Typical items include, clock inserts, polishes, super glue, wood etc

Also available is a range of clothing adorned with the TVWT club logo.

In addition to the above there is a library of books and DVDs which are available for hire at £1 per week. All proceeds going to the Club Funds.

PHOTOGRAPHS

High definition photographs in this publication or on Club website are available for digital download free of charge.

Photographs are sent via email in JPEG format which can be processed at most high street shops with printing facilities i.e. Asda, Boots etc.

Anyone wanting photograph files should email bill.percival@hotmail.co.uk

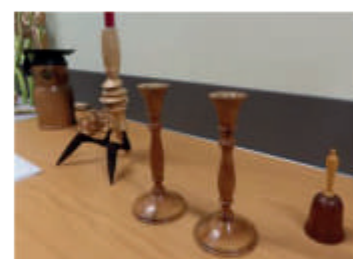
TVWT Christmas Social 2021

The TVWT Christmas Social was held in the Kegworth Village Hall on the evening of Wednesday 8th December 2021. This year the club once again funded an excellent array of food from an external caterer. About 50-60 members and their guests attended, mostly being baffled by two quiz sheets with much groaning as the answers were announced !



As always, many very impressive turned items were on display as entries into the various competitions, pictured below along with the prize winners. The results of the competitions were as follows :-

Competition	1 st Place	2 nd Place	3 rd Place
Turning Between Centres	Tony Stubbins	Stan Ethell	Ian Ethell
Anything Goes	Stan Ethell	Elaine Massey	Tony Stubbins
Turning Using a Chuck	Ian Ethell	Colin Oakhill	Alex Mitchell
Turning Using a Faceplate	Lynne Stubbins	Nick Winfield	Ben Wild
Chairman's Challenge	Bill Percival	Felix Wint	Ben Wild
Cumulative Monthly Results	Stan Ethell	Chris Ford	Ben Wild
Bi-Monthly Members' Choice	Stan Ethell	Chris Ford	Lynne Stubbins
Learn to Turn Class	David Gamsin	Keith Hicklin	Graham Brown
Special Award for Exceptional Service	Bill Percival		





Your Committee 2021/2022



**Chair &
Secretary
Tony Stubbins**



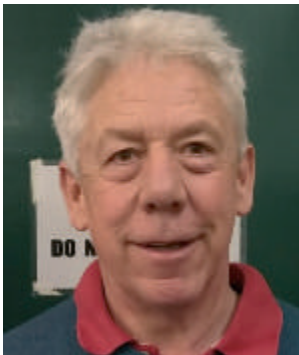
**Vice-Chair &
Events Secretary
Ian Ethell**



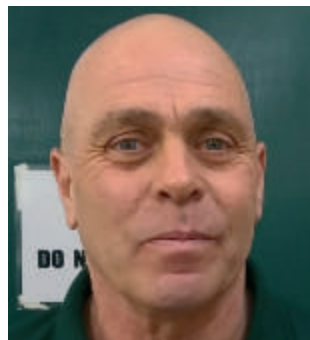
**Webmaster
Ben Wild**



**Treasurer &
Woodword Editor
Bill Percival**



Brian Deakin



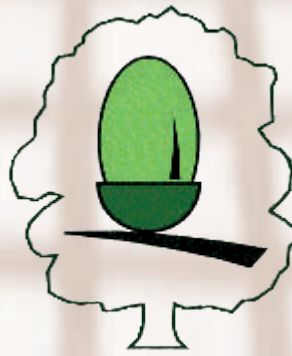
Nick Winfield



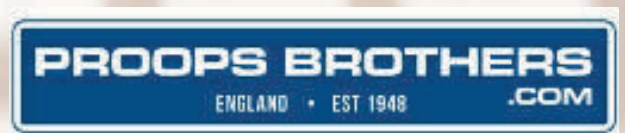
David Smith



Hugh Philip



TRENT VALLEY WOODTURNERS
(Next to) Kegworth Village Hall
Kegworth
Leicestershire
DE74 2FH



LOTTERY FUNDED



/trentvalleywoodturners