



# TRENT VALLEY WOODTURNERS



LOTTERY FUNDED

# WOODWORD



**PLEASE REMEMBER THAT THE WORKSHOP IS  
CLOSED UNTIL FURTHER NOTICE DURING THE  
CORONA-VIRUS PANDEMIC**

Demonstrations	Competitions
None this Quarter	Christmas Challenges
	Anything Goes
	Miniature Teapot

Spring 2021  
Issue 106

## CONTENTS

### PAGE No

2	Editor's Comments
2	TVWT Club Website Information
3-5	Provisional Clubhouse Diary 2021
6	Provisional Club Nights & Demonstrations 2021
6	Forthcoming Events
8	December 2020 Competition - Anything Goes
9	Britannia Waives the Rules
10	Trent Valley Trading & Photographs
11	Chairman's Challenge Christmas 2020 - Ringed Vase of 3 Flowers
12	My Workshop
13	February Competition - Anything Goes
15	Classified Ads
16	March Competition - Miniature Teapot and Stand
18	Rogues Gallery (Your 2020/2021 Committee)

### SPONSORS

7	<u>Chestnut Products</u>
10	<u>Charnwood</u>
14	<u>Turners Retreat</u>
17	<u>Proops Brothers</u>



## A MESSAGE FROM THE EDITOR

I always seem to be apologising for something in this message ! Well, this time its for how thin this edition is. Sadly in the first quarter of 2021 we've not had any demonstrations to report on, though I have been enjoying the Chestnut Products series of demos on You Tube (next one is on April 12<sup>th</sup>). I've also only received one article for inclusion (thanks Stan); this one is accompanied by a warning that it is "Not entirely free of Political Correctness", so if you are easily offended then perhaps give this one a miss ! I enjoyed it so have taken the decision to include it 😊



I hope that you're all looking forward to the next two scheduled remote demonstrations from Rebecca De Groot and Greg Gallegos, both look like they'll be interesting and fun. If you've not tried a remote demo before, give it a try - Meena will be sending out the access links soon.

I really would like to be able to include more contributions from you the members. How about having a go at "My Workshop" (see p12), or perhaps a tale of something that you've made, been given or seen - just suggestions, I'm happy to consider anything I'm sent, and will of course look after the transformation into something for publication

Finally congratulations to our competition winners over the last quarter - Chris Ford, Ben Wild (\*2) and Stan Ethell. Have a go at the next one, it doesn't matter if it isn't as good as theirs, its fun and only the winners are named !

Hopefully see you before much longer now....

**Bill**

## **TVWT WEBSITE**

The Club's Website address is

<http://www.trentvalleywoodturners.co.uk>

Members should visit the Website on a regular basis for any special or breaking news items.



## TRENT VALLEY WOODTURNERS 2021 Clubhouse Diary



	JANUARY	FEBRUARY	MARCH	APRIL
Mon		1	1	
Tue		2 Hands on - Day	2 Hands on - Day	
Wed		3	3	
Thur		4 Hands on Evening	4 Hands on Evening	1 Hands on Evening
Fri	1 New Year's Day	5	5	2 Good Friday
Sat	2	6	6	3
Sun	3	7	7	4 Easter Sunday
Mon	4	8	8	5 Easter Monday
Tue	5 Hands on - Day	9	9	6 Hands on - Day
Wed	6	10 Monthly Meeting	10 Monthly Meeting	7
Thur	7 Hands on Evening	11	11	8
Fri	8	12	12	9
Sat	9 Hands on - Day	13 Hands on - Day	13 Hands on - Day	10 Hands on - Day
Sun	10	14	14	11
Mon	11	15	15	12
Tue	12	16	16	13
Wed	13 Monthly Meeting	17 Open House	17 Open House	14 Monthly Meeting
Thur	14	18 Hands on Evening	18 Hands on Evening	15 Hands on Evening
Fri	15	19	19	16
Sat	16	20	20	17
Sun	17	21	21	18
Mon	18	22	22	19
Tue	19	23	23	20
Wed	20 Open House	24	24	21 Open House
Thur	21 Hands on Evening	25 Hands on - Day	25 Hands on - Day	22 Hands on - Day
Fri	22	26	26	23
Sat	23	27	27	24
Sun	24	28	28	25
Mon	25		29	26
Tue	26		30	27
Wed	27		31	28
Thur	28 Hands on - Day			29
Fri	29			30
Sat	30			
Sun	31			

Monthly Meeting - 2<sup>nd</sup> Wednesday - 1830 to 2100

Hands on DAY - 1<sup>st</sup> Tuesday, 4<sup>th</sup> Thursday, 2<sup>nd</sup> Saturday - 0930 to 1530

Hands on EVENING - 1<sup>st</sup> Thursday, 3<sup>rd</sup> Thursday - 1800 to 2100

Open House (no turning) - 3<sup>rd</sup> Wednesday - 1330 to 1630

Learn to Turn - Trainers & Trainees only - 1900 to 2100 - not yet scheduled



## TRENT VALLEY WOODTURNERS 2021 Clubhouse Diary



	MAY	JUNE	JULY	AUGUST
Mon				
Tue		1 Hands on - Day		
Wed		2		
Thur		3 Hands on Evening	1 Hands on Evening	
Fri		4	2	
Sat	1	5	3	
Sun	2	6	4	1
Mon	3 May Day Hol	7	5	2
Tue	4 Hands on - Day	8	6 Hands on - Day	3 Hands on - Day
Wed	5	9 Monthly Meeting	7	4
Thur	6 Hands on Evening	10	8	5 Hands on Evening
Fri	7	11	9	6
Sat	8 Hands on - Day	12 Hands on - Day	10 Hands on - Day	7
Sun	9	13	11	8
Mon	10	14	12	9
Tue	11	15	13	10
Wed	12 Monthly Meeting	16 Open House	14 Monthly Meeting	11 Monthly Meeting
Thur	13	17 Hands on Evening	15 Hands on Evening	12
Fri	14	18	16	13
Sat	15	19	17	14 Hands on - Day
Sun	16	20	18	15
Mon	17	21	19	16
Tue	18	22	20	17
Wed	19 Open House	23	21 Open House	18 Open House
Thur	20 Hands on Evening	24 Hands on - Day	22 Hands on - Day	19 Hands on Evening
Fri	21	25	23	20
Sat	22	26	24	21
Sun	23	27	25	22
Mon	24	28	26	23
Tue	25	29	27	24
Wed	26	30	28	25
Thur	27 Hands on - Day		29	26 Hands on - Day
Fri	28		30	27
Sat	29		31	28
Sun	30			29
Mon	31 Spring Bank Hol			30 Summer Bank Hol
Tue				31



## TRENT VALLEY WOODTURNERS 2021 Clubhouse Diary



	SEPTEMBER	OCTOBER	NOVEMBER	DECEMBER
Mon			1	
Tue			2 Hands on - Day	
Wed	1		3	1
Thur	2 Hands on Evening		4 Hands on Evening	2 Hands on Evening
Fri	3	1	5	3
Sat	4	2	6	4
Sun	5	3	7	5
Mon	6	4	8	6
Tue	7 Hands on - Day	5 Hands on - Day	9	7 Hands on - Day
Wed	8 Monthly Meeting	6	10 Monthly Meeting	8 Xmas Social
Thur	9	7 Hands on Evening	11	9
Fri	10	8	12	10
Sat	11 Hands on - Day	9 Hands on - Day	13 Hands on - Day	11
Sun	12	10	14	12
Mon	13	11	15	13
Tue	14	12	16	14
Wed	15 Open House	13 Monthly Meeting	17 Open House	15
Thur	16 Hands on Evening	14	18 Hands on Evening	16
Fri	17	15	19	17
Sat	18	16	20	18
Sun	19	17	21	19
Mon	20	18	22	20
Tue	21	19	23	21
Wed	22	20 Open House	24	22
Thur	23 Hands on - Day	21 Hands on Evening	25 Hands on - Day	23
Fri	24	22	26	24
Sat	25	23	27	25 Christmas Day
Sun	26	24	28	26 Boxing Day
Mon	27	25	29	27 Bank Holiday
Tue	28	26	30	28 Bank Holiday
Wed	29	27		29
Thur	30	28 Hands on - Day		30
Fri		29		31
Sat		30		
Sun		31		

## Club Nights 2021 - Provisional

DATE	DEMONSTRATOR
January	
February	
March	
April 10th	Rebecca DeGroot - Zoom
May 12th	Greg Gallegos - Zoom
June 9th	<i>Shaun Clifford - provisional</i>
July 14th	<i>Ian Ethell - provisional</i>
August 11th	<i>Mick Hanbury - provisional</i>
September 8th	<i>TBA</i>
October 13th	<i>Sue Harker - provisional</i>
November 10th	<i>TBA</i>
December 8th	Christmas Social

### FORTHCOMING LOCAL EVENTS

**All cancelled/postponed until further notice.**

### DEMONSTRATIONS FURTHER AFIELD

**All cancelled/postponed until further notice.**

*Save*  
US Stockist  
Enquiries Welcome.  
Tel/Fax 888-631-8311



# CHESTNUT

P A O D U C T S

*first for finishes*

*Lacquers*

*Polishes*

*Waxes*

*Polish Enhancers*

*Wood Treatments*

*Polishing Brushes*

*Abrasives*

*Stains*

*Thinners*

*Applicators*

*Superglues*

*Buffing Systems*

*Acrylic Blanks*

*...and much more*



Used by woodturners of all abilities throughout the UK and the world, the Chestnut Products range of top quality finishes gives outstanding results every time; whatever you are making and whatever your preferred finishing system there is bound to be something in our range to meet your needs.

*See your local stockist for more information  
or for a catalogue/price list contact us at:*

**Chestnut Products**

**PO Box 260, Stowmarket,  
IP14 9BX**

**Tel: 01473 890 118 Fax: 01473 206 522**

**[www.chestnutproducts.co.uk](http://www.chestnutproducts.co.uk)  
[mailroom@chestnutproducts.co.uk](mailto:mailroom@chestnutproducts.co.uk)**

*Stockist enquiries welcome*



## DECEMBER ANYTHING GOES COMPETITION

### Anything Goes

	
<p>Ben Wild</p>	
	
<p>Melvyn Francks</p>	
	
<p>Lynne Stubbins</p>	



## Britannia waives the rules:

Here's a bit of humour from Stan's marine engineering contacts (pre-Brexit).

-----\*\*\*-----

The Royal Navy is proud to announce its new fleet of Type 45 destroyers. Having initially named the first two ships HMS Daring and HMS Dauntless, the Naming Committee has, after intensive pressure from Brussels, renamed them HMS Cautious and HMS Prudence. The next five ships are to be HMS Empathy, HMS Circumspect, HMS Nervous, HMS Timorous and HMS Apologist.

Costing £850 million each, they comply with the very latest employment, equality, health & safety and human rights laws. The Royal Navy fully expects any future enemy to be jolly decent and to comply with the same high standards of behaviour.

The new user-friendly crew's nest has excellent wheelchair access. Live ammunition has been replaced with paintballs to reduce the risk of anyone getting hurt and to cut down on the number of compensation claims. Stress counsellors and lawyers will be on board, as will be a full sympathetic industrial tribunal.

The crew will be 50/50 men and women and will contain the correct balance of race, gender, sexuality and disability. Sailors will only work a maximum of 37 hours per week as per Brussels Rules on Working Hours, even in wartime. All the vessels are equipped with a maternity ward, a crèche and a gay disco. Tobacco will be banned throughout the ship, but recreational cannabis will be allowed in wardrooms and messes.

The Royal Navy is eager to shed its traditional reputation for; "Rum, sodomy and the lash"; so out has gone the rum ration, replaced by sparkling water. Sodomy remains, now extended to include all ratings under 18. The lash will still be available on request.

Saluting of officers is now considered elitist and has been replaced by the greeting "Hello Sailor". All information on notice boards will be in 37 different languages and Braille, with the option for more if personnel from other ethnic groups join the ship's company.

Crew members will now no longer have to ask permission to grow beards and/or moustaches. This applies equally to the female and trans-gender crew.

The MoD is inviting suggestions for a "non-specific" flag because the White Ensign may offend minorities. The Union Jack must never be seen.

The newly re-named HMS Cautious will be commissioned shortly by Captain Hook from the Naval Group Committee of the Finsbury Park Mosque who will break a petrol bomb over the hull. She will gently slide into the sea as the Royal Marines Band plays "In the Navy" by the Village People. Her first deployment will be to escort boatloads of illegal immigrants to ports on England's south coast.

The Prime Minister said, "Our ships reflect the very latest in modern thinking and they will always be able to comply with any new orders or legislation from Brussels."

His final words were, "Britannia waives the rules."

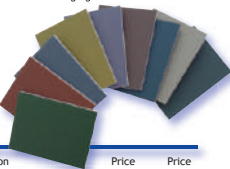
# charnwood

**Woodworking machinery at its best!**

Size 20mm x 20mm x 130mm Long.

Sand on the lathe using our PENSF foam backed sanding pads from 1500 up to 12000 grit to give a super fine finish. Finish with Burnishing Cream for a high gloss finish.

**Foam Backed  
Sanding Pads  
10cm x 8.5cm**



Stock Ref	Description	Price Ex VAT	Price Inc VAT
PENSF	Sanding Pads - Pack of 9	£8.33	£10.00

Designed specifically with pen turners in mind. This finishing kit consists of nine different, colour coded, foam backed sanding pads measuring 10cm (4") x 8.5cm (3.1/4").

Includes the following grit sizes:

1500 - Rust, 1800 - Green, 2400 - Black, 3200 - Tan,  
3600 - Wine/Brown, 4000 - Teal, 6000 - Purple,  
8000 - Royal Blue, 12000 - Grey

Suitable for wood and acrylic blanks.

**New Range of Pen Turning Items  
Including those below**

**Classic Elite  
Rollerball &  
Fountain  
Pen**



Stock ref	Description	Price Ex VAT	Price Inc VAT
PENERB	Classic Elite Rollerball Pen	£6.67	£8.00
PENEF	Classic Elite Fountain Pen	£6.67	£8.00
PENER	Black Rollerball Refill - Pack of 2	£2.08	£2.50
PENET	Spare Tubes - Upper & Lower	£2.08	£2.50
PENEBUSH	Bush Set	£2.50	£3.00
PBD10	10mm Drill Bit	£4.17	£5.00

This high quality gold plated Roller Ball pen makes the ideal gift along with the Fountain Pen.

Visit our website [www.charnwood.net](http://www.charnwood.net) or showroom at Cedar Court, Walker Road, Bardon Hill, Leicester, LE67 1TU  
Tel 01530 516926

## TRENT VALLEY TRADING

Lots of woodturning accessories are available to purchase at discounted prices from the shop. The list and price of equipment is available on request. Typical items include, clock inserts, polishes, super glue, wood etc

Also available is a range of clothing adorned with the TVWT club logo.

In addition to the above there is a library of books and DVDs which are available for hire at £1 per week. All proceeds going to the Club Funds.

## PHOTOGRAPHS

High definition photographs in this publication or on Club website are available for digital download free of charge.

Photographs are sent via email in JPEG format which can be processed at most high street shops with printing facilities i.e. Asda, Boots etc.

Anyone wanting photograph files should email [bill.percival@hotmail.co.uk](mailto:bill.percival@hotmail.co.uk)

## CHAIRMAN'S CHALLENGE COMPETITION

### Chairman's Challenge

				
Chris Ford				
				
Melvyn Francks				
				
Lynne Stubbins				



## My WORKSHOP Feature

Here's our new regular feature, giving members the opportunity to tell us a bit about where and how they turn.

No IT skills are required other than to be able to type the words, The editor looks after the formatting, massaging your responses into shape and including some in each issue of Woodword.

The initial starter set of questions is :-

1. Where and what is your workshop ?
2. What are the best and worst things about it ?
3. What are your main bits of wood working equipment ?
4. What is your favourite bit of equipment ?
5. What is missing, ie. what would you really like to add to the workshop ?
6. If it caught fire, what is the one thing that you would rescue ?
7. What is the best piece of advice that you've received (and do you follow it) ?
8. Do you do any woodworking other than turning ?
9. Do you have any plans to try something new ?

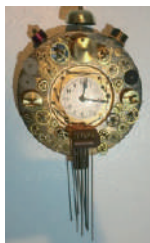
This list can be changed at any time if suitable suggestions are received

**Sadly no entries this edition - please give it a go  
for the summer edition**

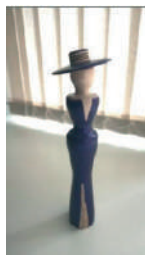
# ANYTHING GOES COMPETITION – February 2021



Jim Hadfield



Chris Ford



Stan Ethell



**Turners Retreat**

THE WOODWORKERS SOURCE

*Craft Supplies*

BE INSPIRED, BE CREATIVE

*Nick Agar*  
**SIGNATURE  
SERIES**



Now available  
at  
Turners  
Retreat



## PETER CHILD ARTIST'S PYROGRAPHY MACHINE

*Create beautiful textures,  
designs and patterns.*

- Slim, light and comfortable pen design
- Perfect for precise detailed work
- Cool running handle for comfort
- Warms from cold in 2 seconds
- Excellent reliability
- Incredible durability

*'I use it every day, its durability is  
nothing short of amazing – it's  
perfect for me and my students.'*

**Bob Neill**

Professional pyrographer and teacher

*Craft Supplies*

A product by... BE INSPIRED, BE CREATIVE

Turners Retreat, Faraday Close, Harworth DN11 8RU

[www.turners-retreat.co.uk](http://www.turners-retreat.co.uk)

01302 744344

[eshop@turners-retreat.co.uk](mailto:eshop@turners-retreat.co.uk)

## **CLASSIFIED ADS**

### **For Sale**

#### **Ebony Spindle Blanks**

approx 250mm \* 25mm \* 25mm

Contact Bernard on 01530 461149 or 07922 125 951

### **Items Wanted**

**'Tools for Africa'** - if you have any surplus usable tools, please contact  
Martin Gladders, Age UK - Men in Sheds, Oaks Industrial Estate,  
Loughborough, LE11 5XN. Tel: 01509 211603



## March 2021 Competition – Miniature Teapot and Stand

Just 5 entries this month – here they are ...



Chris Ford



Stan Ethell



Ben Wild





70 years of tooling excellence.

**PROOPS BROTHERS**  
ENGLAND • EST 1946 **.COM**

34 Saddington Road, Fleckney, Leicestershire, LE8 8AW

## **Your Committee 2020**



**Chair**  
**Tony Stubbins**



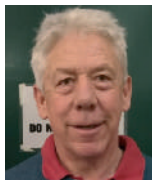
**Vice-Chair &  
Events Secretary**  
**Ian Ethell**



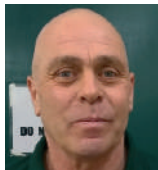
**Secretary**  
**Meena Ethell**



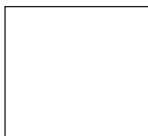
**Treasurer**  
**David Routledge**



**Brian Deakin**



**Nick Winfield**



**David Smith**



**Hugh Philip**

## **Communications**



**Webmaster**  
**Ben Wild**



**Woodward  
Editor**  
**Bill Percival**



TRENT VALLEY WOODTURNERS  
(Next to) Kegworth Village Hall  
Kegworth  
Leicestershire  
DE74 2FH



LOTTERY FUNDED



/trentvalleywoodturners